

# BANANA PLUGS & JACKS

Designers' Choice

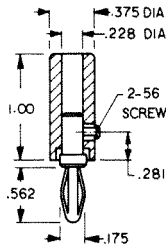


## STD INSULATED PLUG

SOLDERLESS WITH SET SCREW



.175 PLUG



**MATERIAL**

Spring: Nickel Silver  
Body: Brass, Nickel Plate  
Handle: Nylon

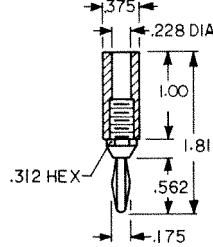
CAT. NO.	COLOR
6084	RED
6085	BLACK

## STD INSULATED PLUG

SOLDER CONNECTION



.175 PLUG



**MATERIAL**

Spring: Nickel Silver  
Body: Brass, Nickel Plate  
Handle: Nylon

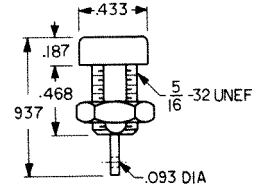
CAT. NO.	COLOR
6080	RED
6081	BLACK

## STD INSULATED JACK

FULLY INSULATED



ACCEPTS .175 PLUG



**MATERIAL**

Body: Nylon  
Contact: Brass, Tin Plate

CAT. NO.	COLOR
6091	RED
6092	BLACK

## STD INSULATED JACK

SOLDER CONNECTION



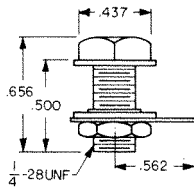
ACCEPTS .175 PLUG

Supplied with lug and nut  
Unassembled

**MATERIAL**

Body: Brass, Nickel Plate  
Terminal: copper, Tinned  
Hex Head: Nylon

CAT. NO.	COLOR
6093	RED
6094	BLACK



## NON-INSULATED JACKS (STAKING)

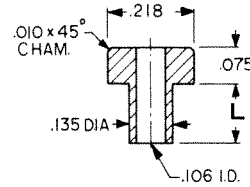
MINIATURE



ACCEPTS .120 PLUG  
MINIATURE

**MATERIAL:** Brass, Tin Plate

CAT. NO.	L
476-2	.125
476-3	.165
476-4	.187



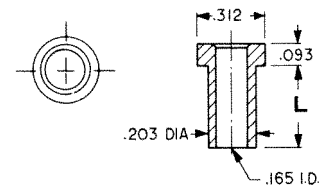
STANDARD



ACCEPTS .175 PLUG

**MATERIAL:** Brass, Nickel Plate

CAT. NO.	L
575-4	.218
575-6	.265
575-8	.350



## STANDARD NON-INSULATED JACKS

RECESSED HEAD

Fits panel up to 5/16" thick

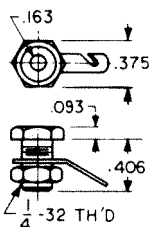
Will accept .175 plug. Complete with hex nut and lug. Unassembled.

**SPECIFICATIONS:** Body: Brass, Nickel Plate Rating: 15 Amps

Terminal: Brass, Tin Plate



CAT. NO. 6095

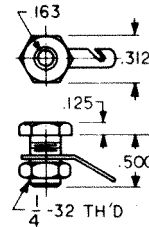


STANDARD HEAD

Fits panel up to 3/8" thick



CAT. NO. 6096



## MINIATURE JACK

NON-INSULATED



ACCEPTS .120 PLUG

Supplied with lug and nut  
Unassembled

**MATERIAL**

Body: Brass, Nickel Plate  
Terminal: Copper, Tinned

CAT. NO. 6090

